

LOOKBOOK



WINTER 23/24

The background of the entire page is a close-up photograph of autumn leaves. The leaves are in various stages of decay, showing a range of colors from bright orange and yellow to deep reds and browns. Many of the leaves are covered in small, clear water droplets, suggesting a recent rain or dew. The lighting is soft, highlighting the textures and veins of the leaves.

Superfolk

THE SUPERFOLK AUTUMN WINTER LOOKBOOK 2023/2024

We so are proud to introduce some great new products to our small but considered range for Winter 23/24.

“The Tree of Leaves” is a new print on washi that brings together the leaves of Irish native trees onto one imaginary branch... this includes Oak, Ash, Rowan, Birch, Scots Pine, Hawthorn, Holly, Willow, Hazel and Alder. This print is a celebration of Ireland’s remaining native woodland, a tool for learning and a reminder to all to protect our rare and precious natural woodlands. This print is inspired by family walks in Brackloon Woods, in County Mayo and by the print “US Tree” designed by Josef Frank in 1943-1945.

We are also introducing the Meander candle holder in with a new Rokusho patina finish. The meandering river is the embodiment of all that is simple and beautiful in nature. The river gently navigates the landscape. Its path is constantly improving and evolving. It is calm and restless at same time. The meandering product range echoes that soft search for the sea, the gentle journey of water from the source to the coast. The Rokusho patina is an ancient Japanese technique and the recipe was historically unavailable outside of Japan until the 19th century.

Another piece that we have reintroduced and reimagined from our Superfolk archive is the simple solid oak Boot Stool with softly rounded edges. Use this stool as an occasional side table, a footstool, a child’s stool, or a favourite spot to tie up your boots. This is an original design from our archive now offered in a shorter height. Inspired by both Japanese bath stools and the Irish vernacular “creepie” stool. Offered in a limited short batch” with the option of ebonized oak or natural oak finishes.

Alongside these items we are introducing the Giant Kelp Forest print on washi. This our largest print yet measuring over 1.5m and is available as a limited edition print. Giant kelp (*Macrocystis pyrifera*) is one of the fastest growing species in the world and a unique and important coastal habitat worldwide. Dense patches of giant kelp create kelp forests that are home to over a thousand species of aquatic animals.

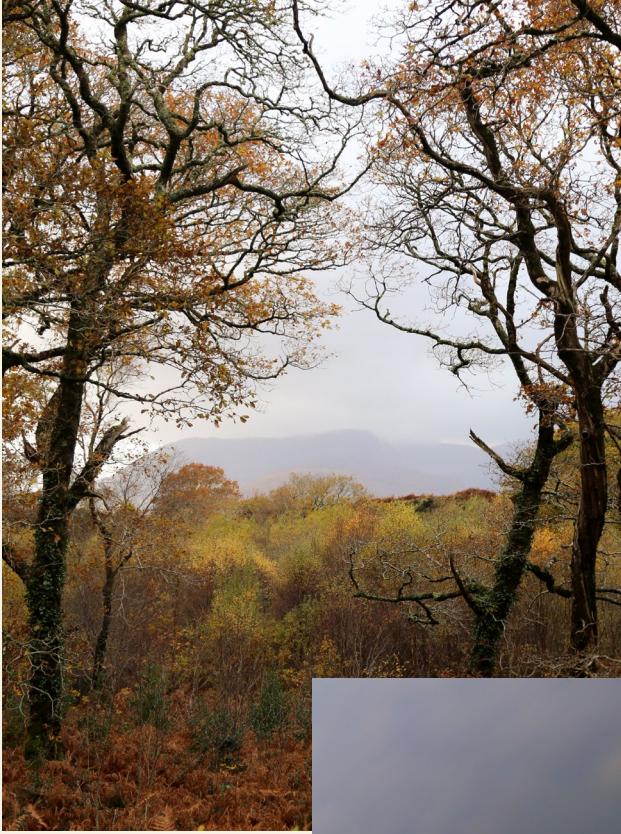
Our lookbook has been photographed on location at The Stilt House in Fernwood, Connemara. The Stilt House is designed by MarMar architects.

“The trees breathe out, we breathe in”

- Luchita Hurtado



Superfolk Giant Kelp Forest Print, Superfolk Boot Stool, Superfolk Bud Vase [1](#) [2](#) [3](#)



Medium Meander Candle Holder with Rokusho Patination 5 6





Superfolk Rowan Print in Rust with Yellow Berries 7 8







Superfolk x Fermoyle Bud Vase 2



Superfolk Otter Incense Holder with Japanese Incense 10 11





Superfolk Meander Candleholder with Rokusho Patination 5 6






Superfolk Shoal Ink Drawing 12



Superfolk Ash Trivet 15 13 2

The background is a dark, muted green with a fine, grainy texture. There are subtle variations in tone and some faint, abstract shapes that suggest a natural or organic material, possibly a close-up of a rock or a piece of fabric. The overall effect is moody and atmospheric.

NIGHT FALLS



Brass Meander with Superfolk x Fermoye Wall Hanging Vase 16 17

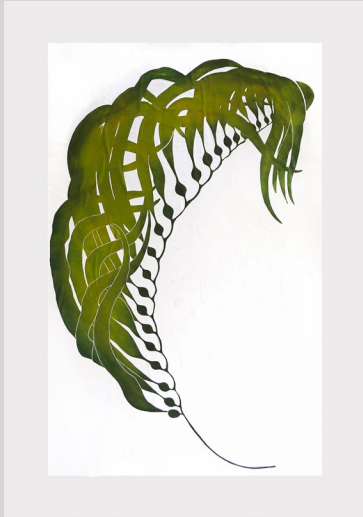


Superfolk Boot Stool 18 2 3



Superfolk Tree of Leaves Print in Rust 8 9





150 X 97 CM

ON A JAPANESE WASHI PAPER

1

GIANT KELP FOREST PRINT



D6,5 X H10 CM

FIRE CLAY

2

BUD VASE



25 X 40 X 29 CM

SOLID OAK

3

BOOT STOOL

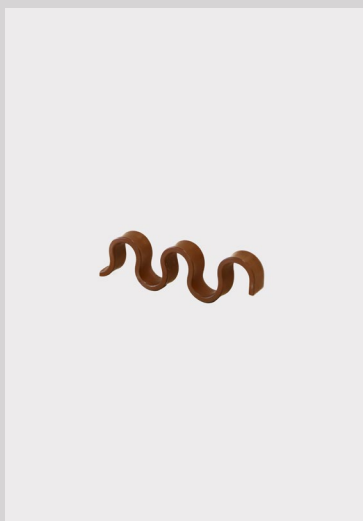


25 X 40 X 29 CM

SOLID OAK

4

EBONIZED BOOT STOOL



H2 X W5 X L10 CM

COPPER WITH ROKUSHO

5

ROKUSHO MEANDER
CANDLE HOLDER

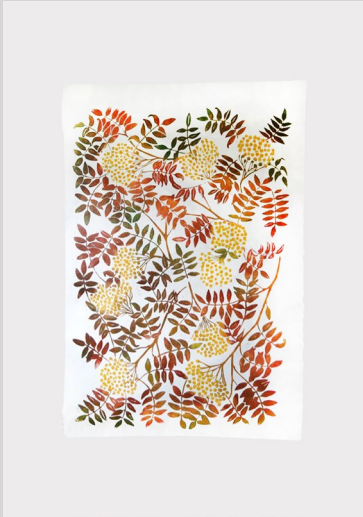


H20 X D2,2 CM

100% BEESWAX

6

DINNER CANDLES



99 X 61 CM ON A JAPANESE WASHI PAPER

7

ROWAN PRINT, YELLOW AND RUST



62 CM WIDE PLYWOOD

8

LARGE HANGING FRAME



99 X 61 CM ON A JAPANESE WASHI PAPER

9

THE TREE OF LEAVES PRINT



12,5 X 2,5 X 0,5 CM SOLID BRASS

10

OTTER INCENSE HOLDER



113,5 CM RAW BAMBOO AND CHARCOAL

11

BAMBOO CHARCOAL INCENSE



58 X 76 CM HANDMADE WATERCOLOUR PAPER

12

SHOAL INK DRAWING

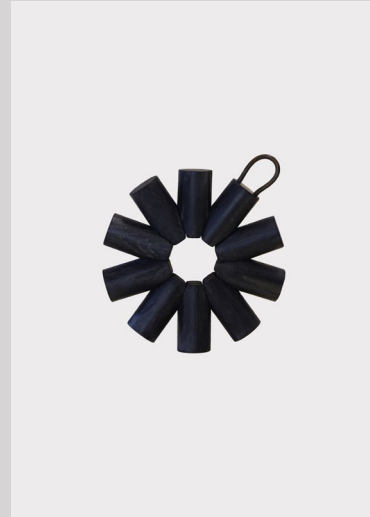


4 X 18 CM

OAK AND CORD

13

OAK TRIVET



4 X 18 CM

OAK AND CORD

14

EBONIZED OAK TRIVET

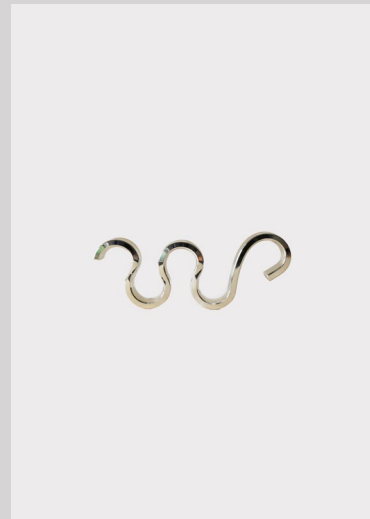


4 X 30 CM

ASH AND BUNGEE CORD

15

ASH TRIVET



H2 X W5 X L10 CM

BRASS PLATED COPPER

16

BRASS MEANDER CANDLE HOLDER

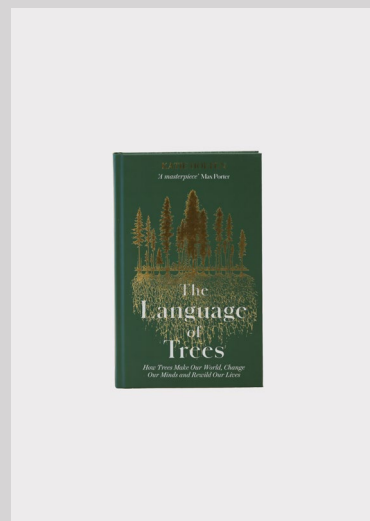


D9 X H19 X H25 CM

FIRE CLAY

17

WALL HANGING VASE



18

THE LANGUAGE OF TREES
BY KATIE HOLTEN

GRATITUDE

The Superfolk Winter 2023/2024 Lookbook was photographed in November 2023 at the incredible Stilt House at the very beautiful Fernwood, in Clifden, Co. Galway. We highly recommend a stay at Fernwood.

The Stilt House was designed by the excellent Marmar Architects.

With massive thanks to Alessia Iacovozzi and to Anne and Simon at Fernwood



Superfolk

We are Superfolk.

We are a team of designers and makers, recognised internationally for designing simple, beautiful material-led objects.

Our mission to share our passion for our environment is deeply infused in all we do. We believe in breaking down the walls that contain us and uncovering the strange, wild beauty of our natural world. From furniture to paper products, printed fabrics to ceramics, we shape our products around the characteristics of our raw materials. Imbued with poetry and optimism for sustainable living we make quality, durable goods from natural materials that embrace use and the passing of time.

CONTACT US

Email: General: hello@superfolk.com

Customer/Retail Enquiries : retail@superfolk.com

Telephone: +353 87 7982495

Superfolk Studio operates Monday to Friday, from 10am to 5pm.

And of course you can always find us on Instagram, Twitter and Pinterest



Superfolk



hello@superfolk.com, iHub, GMIT, Westport Road, Castlebar, County Mayo, Ireland